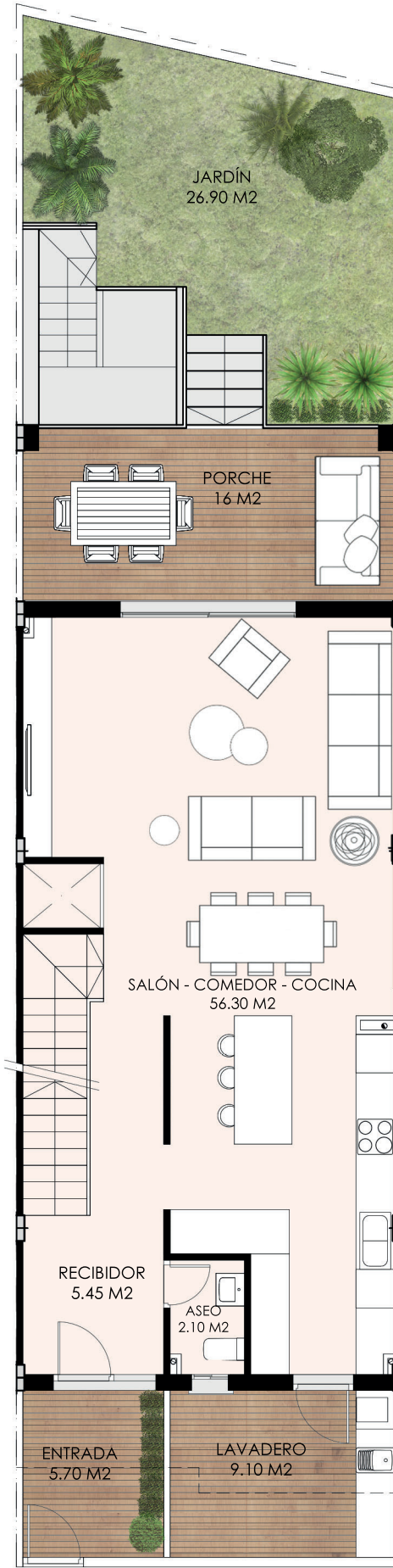
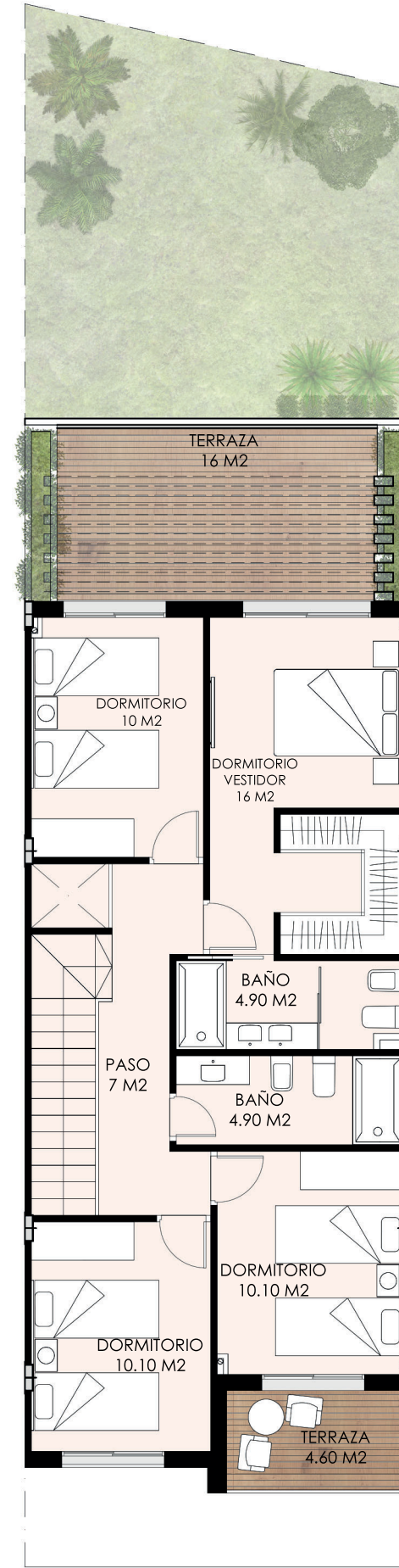


PLANTA SOTANO



PLANTA BAJA



PLANTA ALTA

VIVIENDA 11

| PLANTA SOTANO | SUP. UTIL | SUP. CONST. |
|-------------------------|-----------------------------|-----------------------------|
| Garaje | 50,60 m ² | |
| Bodega | 42,15 m ² | 132,77 m ² |
| PLANTA BAJA | | |
| Vivienda | 68,95 m ² | 72,60 m ² |
| PLANTA ALTA | | |
| Vivienda | 67,55 m ² | 79,40 m ² |
| TOTAL INTERIOR | 229,25 m² | 284,77 m² |
| ZONAS EXTERIORES | | |
| Patio sótano | 5,15 m ² | |
| Patio ingreso | 5,70 m ² | |
| Lavadero | 9,10 m ² | |
| Porche | 16,00 m ² | |
| Jardín | 26,90 m ² | |
| Terraza planta alta 1 | 16,00 m ² | |
| Terraza planta alta 2 | 4,60 m ² | |
| TOTAL EXTERIOR | 83,45 m² | |



Escala: 1:100